

Press Release 2023-10-31

ROHR2 Pipe Stress training schedule 2023/2024

SIGMA announces the ROHR2 pipe stress analysis training schedule 2023/2024 for ROHR2 group trainings.

SIGMA offers individual ROHR2 courses as well as ROHR2 group training units.

Group trainings can be booked as following:

- 2 day **ROHR2 basic training**
- 1 day ROHR2fesu training

**ROHR2 trainings are provided as online courses only.
Please contact the sales team concerning technical requirements and training licenses.**



ROHR2 group training dates

Training	Language	Duration/days	Date
2023			
ROHR2 Basic	English	2	Nov 21-22, 2023
2024			
ROHR2 Basic	English	2	Febr 06-07, 2024
ROHR2 Basic	English	2	May 07-08, 2024
Summer Break			
ROHR2 Basic	English	2	Aug 27-28, 2024

German courses please see website.

The courses are held by engineers, experienced in the field of pipe stress engineering and provide participants with knowledge of the ROHR2 handling and effective realization of its comprehensive possibilities.

Registration ROHR2 group training

For registration, training agenda and additional information [please check our website](#).

Download the registration form, select a date, enter your data to the registration form and send it to ROHR2 sales team: sales@rohr2.com

The participation requires written confirmation by SIGMA. All data subject to change.

Individual training units

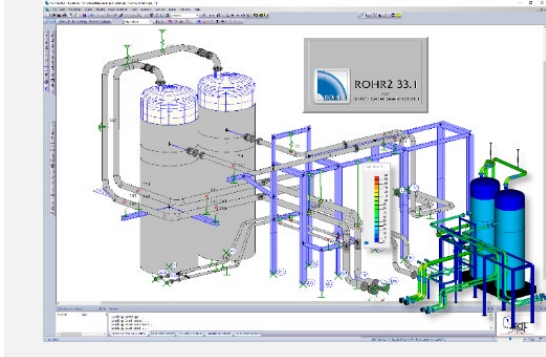
For an individual offer on a program training (advanced training, internet training course, training-on-the-project) please contact us.

Third-party trainings

Webinars and trainings in additional languages are taking place in cooperation with our Sales Partners. Please pay attention to our [news](#), and [Sales Partners training schedules](#)

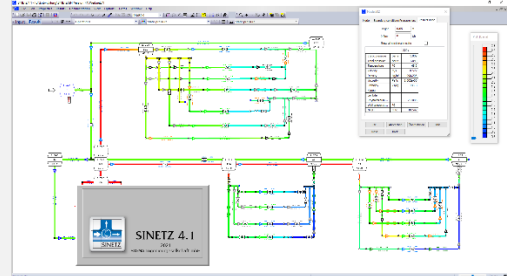
We would be very glad to welcome you to the training.

ROHR2



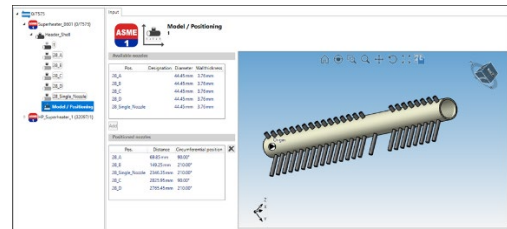
For more than 40 years ROHR2 is a leading Software for Pipe Stress Analysis, a standard tool for pipe static and structural framework analysis, covering a variety of specifications like ASME, EN, ISO14692, KTA, CODETI or RCCM. The software is equipped by a range of additional features enhancing the engineer's daily job, as there are FEM analysis (ROHR2fesu), isometric capabilities (ROHR2iso) and a wide range of CAD and CAE interfaces.

SINETZ



Flow Distribution, Pressure Drop and Heat Loss in Branched and Intermeshed Piping Networks

PROBAD



PROBAD modules for strength calculations of pressure parts

About: SIGMA

SIGMA as one of the leading engineering specialists in the Pipe Stress Business offers ROHR2, PROBAD and SINETZ: field tested software products, strongly adapted to the user's needs.

SIGMA engineering division is known as a partner of choice offering consulting services for plant engineering, chemical industry, engineering companies, energy suppliers and technical security boards.

Contact:

SIGMA Ingenieurgesellschaft mbH
 Bertha-von-Suttner-Allee 19
 D-59423 Unna, Germany
 Tel +49 2303 33233-0
 sales@rohr2.com



www.rohr2.de

Worldwide

Contact our [Sales partners](#)



www.rohr2.com

