

Press Release 2010-03-16

ROHR2 Pipe Stress Analysis training 2010 - SIGMA announces training schedule

Unna, Germany, March 2010

SIGMA announces the ROHR2 Pipe stress analysis training schedule for 2010. The courses are held by engineers, experienced in the field of pipe stress engineering and provides participants with knowledge of the ROHR2 handling and effective realization of the comprehensive possibilities. The trainings will be held in Unna, Germany at the SIGMA own ROHR2 training center

Training agenda

- Basics of static calculation
- ROHR2 tasks
- System input, Supports
- Loads, Load case definitions
- Calculation and Representation of Results
- Documentation
- Handling of ROHR2WIN graphical user interface
- Training Examples, customers projects or SIGMA training examples
- Analysis of results
- Stress analysis and stress codes
- Extreme value calculation, Support loads
- Analysis of the system and optimization
- Interfaces



ROHR2 Training schedule
(Group training, English)

- April 07/08, 2010 (completed)
- June 01/02, 2010
- Sept 28/29, 2010
- Nov 23/24, 2010

Course information and registration forms can be found at <http://www.rohr2.com/html/training.html>
For group trainings in German language please see www.rohr2.de

For general information about SIGMA, ROHR2 and related products and services meet us at <http://www.rohr2.com>

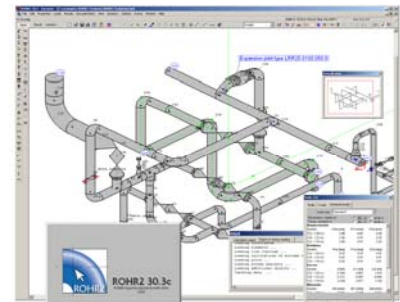
About: ROHR2

ROHR2 is the leading European Software for Pipe Stress Analysis, a standard tool for pipe static and structural framework analysis, covering a variety of specifications like ASME, ANSI, KTA, EN 13480, STOOMWEZEN D1101, BS 7159 and ISO 14692.

The software is equipped by a range of additional features enhancing the engineer's daily job, as there are FEM analysis (ROHR2FESU), isometric capabilities (ROHR2ISO) and a wide range of interfaces covering the leading CAD/CAE systems.

A large portfolio of interfaces for CAD and CAE systems, a user integrating software training and the maintenance concept including program updates and user support complete the functionality of ROHR2.

ROHR2 is developed continuously in order to incorporate the ongoing changes in the stress calculation codes and norms but also to improve the user interface and extend the capabilities of ROHR2 according to the users needs.



Contact:

SIGMA Ingenieurgesellschaft mbH
Bertha-von-Suttner-Allee 19
D-59423 Unna
Germany
Tel +49 2303 33233-0
sales@rohr2.com

or
meet our **SALES PARTNERS** at



www.rohr2.com



www.rohr2.de

