

**Press Release 09/09/2009**

**ROHR2 Pipe Stress Analysis training - SIGMA announces training schedule**

Unna, Germany, September 2009

SIGMA announces the ROHR2 Pipe stress analysis training schedule for 2009/2010.

The courses are held by engineers, experienced in the field of pipe stress engineering and provides participants with knowledge of the ROHR2 handling and effective realization of the comprehensive possibilities  
The trainings will be held in Unna, Germany in the SIGMA own ROHR2 training center

**Training agenda**

- Basics of static calculation
- ROHR2 tasks
- System input, Supports
- Loads, Load case definitions
- Calculation and Representation of Results
- Documentation
- Handling of ROHR2WIN graphical user interface
- Training Examples, customers projects or SIGMA training examples
- Analysis of results
- Stress analysis and stress codes
- Extreme value calculation, Support loads
- Analysis of the system and optimization
- Interfaces



**Training schedule**

next training dates:

- 07./08. Oct. 2009
- 25./26: Nov 2009
- 03./04. Febr. 2010
- 07./08. Apr. 2010
- 01./02. June 2010

Course information and registration forms can be found at <http://www.rohr2.com/html/training.html>  
For group trainings in German language please see here

For general information about SIGMA, ROHR2 and related products and services meet us at <http://www.rohr2.com>

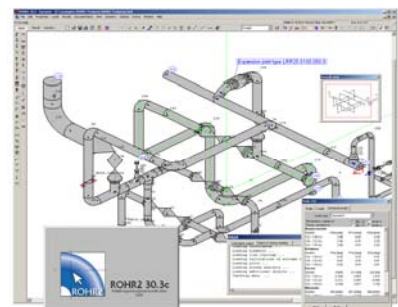
**About: ROHR2**

ROHR2 is the leading European Software for Pipe Stress Analysis, a standard tool for pipe static and structural framework analysis, covering a variety of specifications like ASME, ANSI, KTA, EN 13480, STOOMWEZEN D1101, BS 7159 and ISO 14692.

The software is equipped by a range of additional features enhancing the engineer's daily job, as there are FEM analysis (ROHR2FESU), isometric capabilities (ROHR2ISO) and a wide range of interfaces covering the leading CAD/CAE systems.

A large portfolio of interfaces for CAD and CAE systems, a user integrating software training and the maintenance concept including program updates and user support complete the functionality of ROHR2.

ROHR2 is developed continuously in order to incorporate the ongoing changes in the stress calculation codes and norms but also to improve the user interface and extend the capabilities of ROHR2 according to the users needs.



**Contact:**

SIGMA Ingenieurgesellschaft mbH  
Bertha-von-Suttner-Allee 19  
D-59423 Unna  
Germany  
Tel +49 2303 33233-0  
sales@rohr2.com

or  
meet our SALES PARTNERS at



[www.rohr2.com](http://www.rohr2.com)



[www.rohr2.de](http://www.rohr2.de)