

Press Release 08/28/2009

ROHR2 Update 30.3c - Pipe Stress Analysis now released

Unna, Germany, August 2009

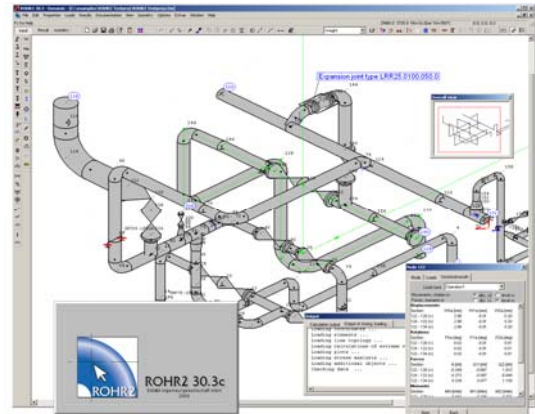
SIGMA GmbH announces the release of ROHR2 30.3c.

The new release **ROHR2 30.3c** adds several features like:

- Extended data bases for tee's reducers, bends and caps were extended with data from EN 10253-2
- Includes the internal pressure analysis for bands acc. to AD 2000 B1
- The CII import interface has been revised.
- The function 'Extras - determine length of the selected segments' displays now also the mass of the selected region.

as well as modifications of the internal ROHR2 core module

For details please refer to the ROHR2 30.3c update info or meet us at www.rohr2.com for a detailed overview about the features of ROHR2, additional programs and interfaces.



About: ROHR2

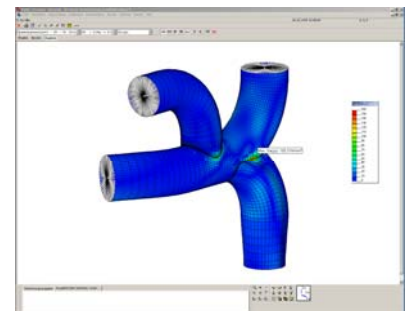
ROHR2 is the leading European Software for Pipe Stress Analysis, a standard tool for pipe static and structural framework analysis, covering a variety of specifications like ASME, ANSI, KTA, EN 13480, STOOMWEZEN D1101, BS 7159 and ISO 14692.

The software is equipped by a range of additional features enhancing the engineer's daily job, as there are FEM analysis (ROHR2FESU), isometric capabilities (ROHR2ISO) and a wide range of interfaces covering the leading CAD/CAE systems.

ROHR2 STATIC and DYNAMIC includes the Neutral CAD interface and PDMS input/output integration. There are several options to integrate ROHR2 into your IT-Structure like single user licenses, network licenses or multi-user solutions.

A large portfolio of interfaces for CAD and CAE systems, a user integrating software training and the maintenance concept including program updates and user support complete the functionality of ROHR2.

ROHR2 is developed continuously in order to incorporate the ongoing changes in the stress calculation codes and norms but also to improve the user interface and extend the capabilities of ROHR2 according to the users needs.



About: SIGMA

SIGMA, established in 1989 in Dortmund, Germany has emerged as a partner of choice for leading international companies with its software and the wide variety of engineering services.

SIGMA is known as one of the leading engineering specialists in the Pipe Stress Business in Europe, offering field tested products, strongly adapted to the users needs.

Contact:

SIGMA Ingenieurgesellschaft mbH
 Bertha-von-Suttner-Allee 19
 D-59423 Unna
 Germany
 Tel +49 2303 33233-0
 sales@rohr2.com

or
 meet our SALES PARTNERS at



www.rohr2.com



www.rohr2.de